

LUKAS

Passion makes the difference!

CRASH
Recovery System®



The **FUTURE** for **Rescue Workers!**

This mobile information system allows rescue workers to extricate victims quickly and safely from crashed vehicles!

With this software

- ✓ object information,
- ✓ accessibility information and
- ✓ prevention and intervention instructions for potential risks are available on the spot.

MODITECH
RESCUE SOLUTIONS®



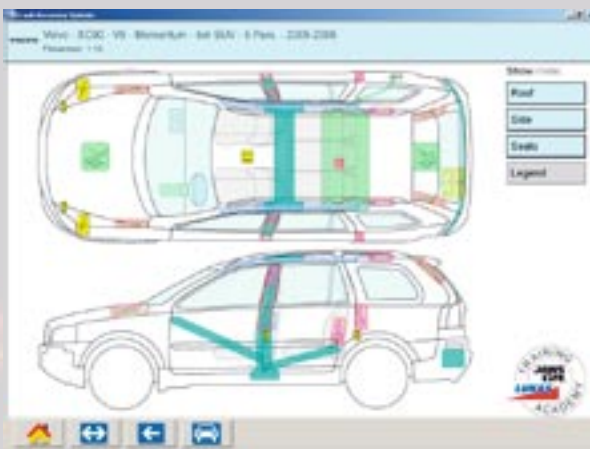
The Conflict Between Safety and Accessibility

Due to multiple new safety systems the survival rate of victims of vehicle accidents has increased significantly. After an accident, however, these new technologies make it more difficult for the rescue worker to access and extricate victims from the wrecked vehicle. Many safety restraint components turn into a potential hazard for the rescue worker and the victim after an accident. Known examples are e.g. undeployed airbags, airbag gas generators and belt pretensioners. Therefore, determining the locations and deactivation procedure of these components is extremely important during the extrication process. This is not an easy task considering that the locations and specifications of safety components can be significantly different for the various makes and models of vehicles. Moreover, new models and systems appear on the market continuously, making it an impossible task for the rescue worker to keep up with technology!



The Solution

Moditech Rescue Solutions BV recognized the need of a practical solution for this problem at a very early stage. Resulting in the introduction of the Crash Recovery System: a mobile vehicle information database. This database runs on virtually every tablet, desktop or laptop PC. Regular internet updates keep the pace with market development. With the Crash Recovery System, the rescue worker can quickly and easily retrieve all necessary information right at the scene of the accident. After selecting the correct vehicle model a graphic of the selected vehicle model appears on the screen. The rescue worker then has access to an interactive top and side view of the vehicle, displaying all safety components as well as other relevant items such as the battery, fuel tank, windshields, etc. in one window. After clicking a component of choice, the rescue worker instantly receives important information about the component such as its location, specifications and deactivation method. By delivering this critical information, the Crash Recovery System ensures an efficient and safe extrication process and supports the rescue worker to choose the best methods.



Key Features and Benefits

Quick and easy to use

- ✓ Technical information about the safety restraint system and other relevant components appears instantly on the screen.
- ✓ Clearly organized graphics show the exact locations of all components that are potentially dangerous.
- ✓ Detailed specifications and deactivation instructions of all components are displayed after just a single click on the component.

Saves valuable time

- ✓ No time is wasted scanning the vehicle for the locations of potentially dangerous components.
- ✓ Deactivation instructions enable quick elimination of all possible hazards.
- ✓ The rescue worker is able to focus quickly on his main objective: **extrication of victims!**

Increases safety

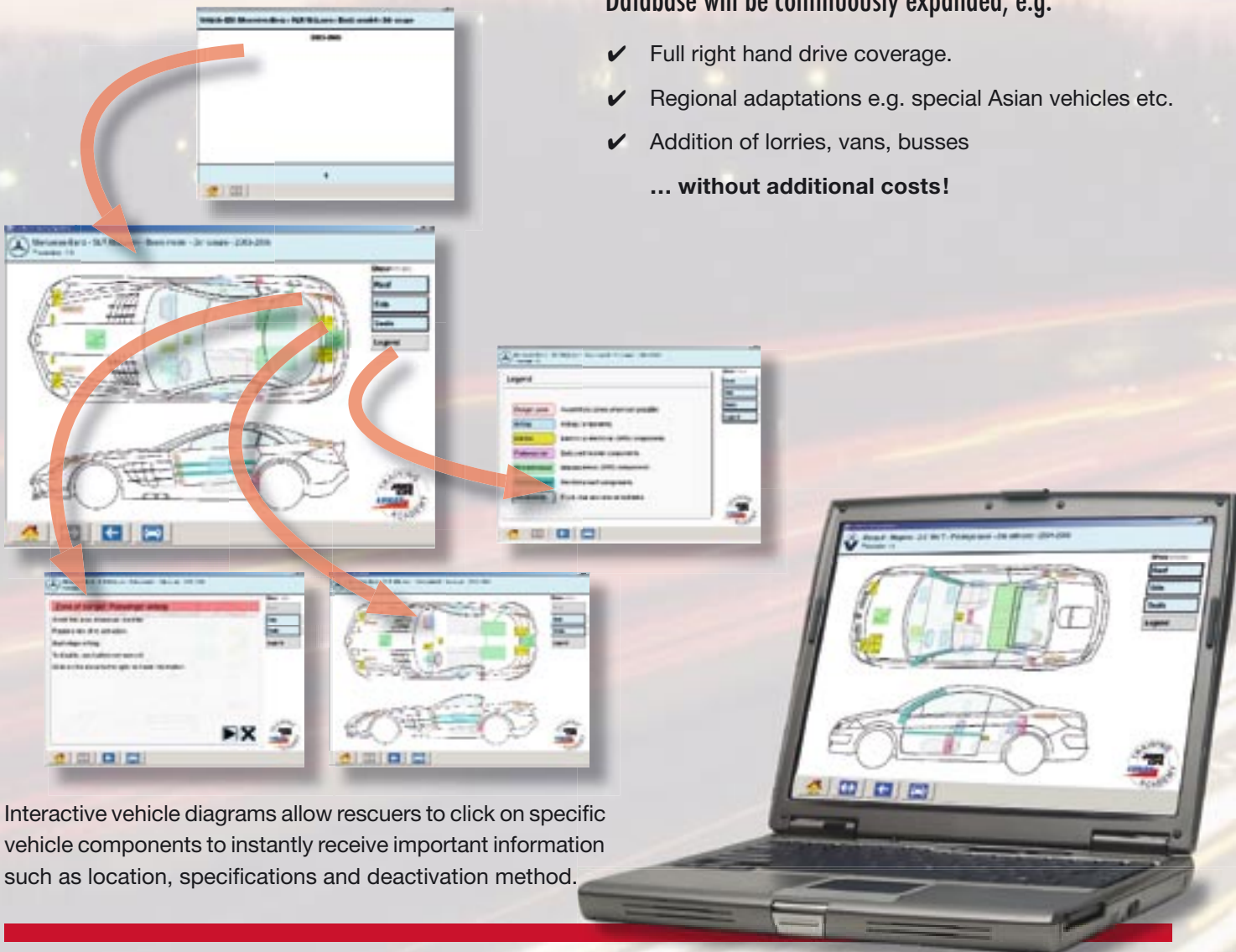
- ✓ Information about locations and deactivation procedures of potentially dangerous components makes it possible to work safely.
- ✓ Minimizes the risks for the rescue worker and for the victim because the rescue worker has an overview of all relevant components in the vehicle.

Mobile, comprehensive and up to date

- ✓ Instant access to vehicle information on the scene of the accident.
- ✓ Multilingual
- ✓ Database currently includes more than 20.000 models and is regularly updated.
- ✓ Updates via any Internet connection.

Database will be continuously expanded, e.g.

- ✓ Full right hand drive coverage.
- ✓ Regional adaptations e.g. special Asian vehicles etc.
- ✓ Addition of lorries, vans, busses
... **without additional costs!**



Interactive vehicle diagrams allow rescuers to click on specific vehicle components to instantly receive important information such as location, specifications and deactivation method.

Installation & Activation:

- For installing and activating the CRS, it is required to log in as **Administrator** (means user must have authorization to install software on the computer), otherwise the software will not work properly.

- Software activation requires a one time call at the Moditech Helpdesk in the Netherlands (Tel.: +31 228 353040) by the customer.

Technical Requirements

| | |
|-------------------|---|
| Processor: | Pentium III 800 MHz or higher |
| Hard disk: | Minimum 8 GB free memory required |
| Memory: | Minimum 512 MB RAM |
| Operating system: | Windows 2000 or Windows XP Professional |

Updates

The CRS has been developed with the future in mind!

Software and database updates are provided on a regular basis and can be downloaded via any internet connection¹. This ensures that the information in the vehicle database is always up to date with the latest developments in the automotive industry available for the rescue worker.

1) Download size can be up to 8 MB. Updating via a slow dial-up internet connection may therefore in some cases take up to 1 hour. Where internet updating is not possible, a quarterly update CD-ROM can be obtained from your local distributor.

License Renewal

The CRS will expire after the initial license period and can no longer be loaded.

Therefore do not forget to have your license renewal approved before expiration date!



Please contact your local distributor for further information!

Your Personal Rescue Assistant

At first glance you might consider only one software license for your fire brigade.

But there are strong reasons to widen this view ...

- Like explained before the combination of **know how** and **applicable rescue tools** will increasingly become essential in rescue work. Every fire- or rescue truck should have the CRS on hand in order to be prepared for each single accident – no matter what car is involved.

This would minimize the risk for the rescue workers while performing extrication and can effectively contribute to prevent rescue teams from the fatal situation where victims loose their lives just because they can't be extricated from their safe cars!

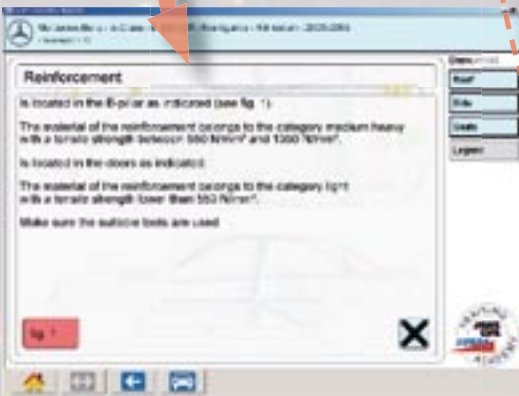
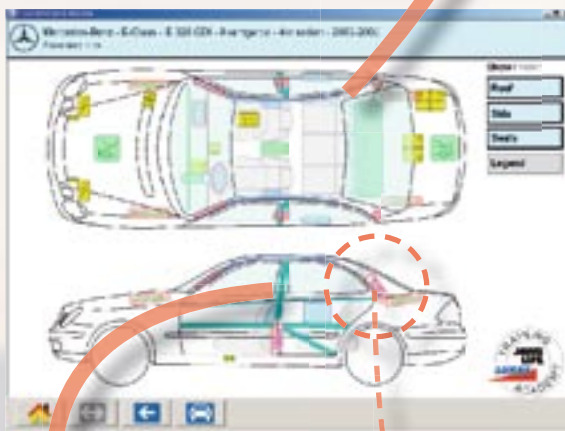
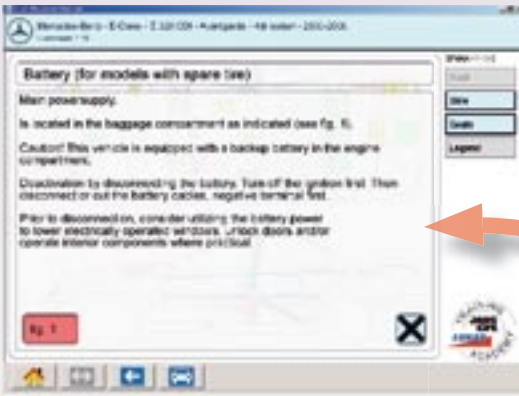
- The knowledge about modern car construction and its tremendous consequences for vehicle extrication still hasn't settled within the worldwide rescue organizations.

Without adequate training, negative headlines in the media because of failed rescue attempts are only a question of time ...

The CRS fits perfect for all **training classes** about rescue tactics and methods!

It meanwhile plays an important role in the different training classes at our 'JAWS OF LIFE Training Academy' and is extremely well received.

- The CRS can even be considered as a **personal software** for **every firefighter**.



JAWS OF LIFE®

Creating life-saving solutions – this job demands a high level of competence as well as a strong sense of responsibility. **JAWS OF LIFE** is the reliable partner for meeting the daily challenges of rescue service. Extensive expertise through longstanding experience forms the basis for continuous innovation at the highest level of quality.

JAWS OF LIFE has uniquely shaped the history of rescue technology through its revolutionary products, including:

- The first hydraulic rescue cutter
- The first rescue spreader
- The first combi tool
- The first mini lifting bag 8 bar
- The first pipe sealing bag
- The first telescopic rescue ram
- The first Trimo power unit
- The first cutter with a cutting force of more than 70 tons

These and other milestones in technical rescue form a firm basis for the dominant market position of **JAWS OF LIFE**, the world's number 1 provider of complete hydraulic and pneumatic rescue systems.

We continue to expand our local presence with the aim of offering you the very best personal service available. The associated brands **HURST, CENTAUR, LUKAS, DINGLEE, VETTER** and **VEPRO** make us the global player whose passion is to deliver maximum performance to you.

JAWS OF LIFE – Working Together to help **You Save Lives**

Moditech Rescue Solutions BV

With more than 10 years experience with data-acquisition and software development for the collision repair industry, Moditech Rescue Solutions BV has developed a speciality in design and implementation of mobile information systems for rescue workers. The company owns a large database containing technical information for passenger cars, vans and trucks. Due to close relationships with car manufacturers on international level, Moditech continually maintains and keeps this valuable source of information up to date: data for a new model often is available before

the official market release! Translation of the database with technical information into a practical solution for rescue workers was a logic step that led to the development of the new Crash Recovery System®, a mobile vehicle information system that enables the rescue worker to work quicker and safer during extrication of victims from crashed vehicles.

